

*We Control
the Power within*



Our 35 years of history



2007



2000



2009



1979



1980



2014



The evolution of quality



MA	LINE	_____	4
AV	LINE	_____	8
AP	LINE	_____	10
MB	LINE	_____	12
HP	LINE	_____	16
MP	LINE	_____	17
MM	LINE	_____	18
MX	LINE	_____	20
CX	LINE	_____	22
OX	LINE	_____	23
GX	LINE	_____	24
VX	LINE	_____	25
RX	LINE	_____	26
RA	LINE	_____	28
MC	LINE	_____	32
MO	LINE	_____	34
GU	LINE	_____	36
GU SAFETY	LINE	_____	40
MV	LINE	_____	44



MA LINE



Raccordi Automatici in **Ottone Nichelato**
Brass Nickel Plated Push-in Fittings
 Steckverschraubungen aus **Messing vernickelt**



MA11 04 18
 MA11 04 14
 MA11 06 18
 MA11 06 14
 MA11 08 18
 MA11 08 14
 MA11 08 38
 MA11 10 14
 MA11 10 38
 MA11 10 12
 MA11 12 14
 MA11 12 38
 MA11 12 12
 MA11 14 38
 MA11 14 12



MA 11



MA 12

MA12 03 M3
 MA12 03 M5
 MA12 04 M5
 MA12 04 M6
 MA12 04 M7
 MA12 04 18
 MA12 04 14
 MA12 06 M5
 MA12 06 M6
 MA12 06 M7
 MA12 06 M12x1,25
 MA12 06 M12x1,5
 MA12 06 18
 MA12 06 14
 MA12 08 18
 MA12 08 14
 MA12 08 38
 MA12 08 12
 MA12 10 14
 MA12 10 38
 MA12 10 12
 MA12 12 14
 MA12 12 38
 MA12 12 12
 MA12 14 38
 MA12 14 12



MA 13

MA13 04 18
 MA13 06 18
 MA13 06 14
 MA13 08 18
 MA13 08 14
 MA13 08 38
 MA13 10 14
 MA13 10 38
 MA13 10 12



MA 14

MA14 04 18
 MA14 04 14
 MA14 06 18
 MA14 06 14
 MA14 08 18
 MA14 08 14
 MA14 10 14
 MA14 10 38



MA 15

MA15 04 18
 MA15 04 14
 MA15 06 18
 MA15 06 14
 MA15 08 18
 MA15 08 14
 MA15 08 38
 MA15 10 14
 MA15 10 38
 MA15 12 38
 MA15 12 12
 MA15 14 38
 MA15 14 12



MA 16

MA16 03 M5
 MA16 04 M5
 MA16 04 M6
 MA16 04 18
 MA16 04 14
 MA16 06 M5
 MA16 06 M6
 MA16 06 M12x1,25
 MA16 06 M12x1,5
 MA16 06 18
 MA16 06 14
 MA16 08 18
 MA16 08 14
 MA16 08 38
 MA16 08 12
 MA16 10 14
 MA16 10 38
 MA16 10 12
 MA16 12 14
 MA16 12 38
 MA16 12 12
 MA16 14 38
 MA16 14 12



MA 17

MA17 04 18
 MA17 06 18
 MA17 06 14
 MA17 08 18
 MA17 08 14
 MA17 10 14
 MA17 10 38



MA 18

MA18 03 M3
MA18 03 M5
MA18 04 M5
MA18 04 18
MA18 06 M5
MA18 06 18
MA18 06 14
MA18 08 18
MA18 08 14
MA18 10 14
MA18 10 38
MA18 12 38
MA18 12 12



MA 19

MA19 04 18
MA19 06 18
MA19 06 14
MA19 08 18
MA19 08 14



MA 20

MA20 04 18
MA20 04 14
MA20 06 18
MA20 06 14
MA20 08 18
MA20 08 14
MA20 08 38
MA20 10 14
MA20 10 38
MA20 12 38
MA20 12 12



MA 21

MA21 04 18
MA21 04 14
MA21 06 18
MA21 06 14
MA21 08 18
MA21 08 14
MA21 08 38
MA21 10 14
MA21 10 38
MA21 12 38
MA21 12 12



MA 22

MA22 04 M5
MA22 04 18
MA22 06 M5
MA22 06 18
MA22 06 14
MA22 08 18
MA22 08 14
MA22 10 14
MA22 10 38
MA22 12 38
MA22 12 12



MA 23

MA23 04 18
MA23 04 14
MA23 06 18
MA23 06 14
MA23 08 18
MA23 08 14
MA23 10 14
MA23 10 38
MA23 12 38
MA23 12 12



MA 24

MA24 04 18
MA24 04 14
MA24 06 18
MA24 06 14
MA24 08 18
MA24 08 14
MA24 10 14
MA24 10 38
MA24 12 38
MA24 12 12



MA 25

MA25 03 04
MA25 04 06
MA25 04 08
MA25 04 10
MA25 04 12
MA25 06 04
MA25 06 08
MA25 06 10
MA25 06 12
MA25 06 14
MA25 08 06
MA25 08 10
MA25 08 12
MA25 08 14
MA25 10 12
MA25 10 14
MA25 12 14



MA 26

MA26 03 03
MA26 04 04
MA26 06 06
MA26 06 04
MA26 08 08
MA26 08 06
MA26 10 10
MA26 10 08
MA26 12 12
MA26 14 14



MA 27

MA27 03 03
MA27 04 04
MA27 06 06
MA27 08 08
MA27 10 10
MA27 12 12



MA 28

MA28 03 03
MA28 04 04
MA28 06 06
MA28 08 08
MA28 10 10
MA28 12 12
MA28 14 14



MA 29

MA29 03 03
MA29 04 04
MA29 06 06
MA29 08 08
MA29 10 10
MA29 12 12
MA29 14 14



MA 30

MA30 00 M5
MA30 00 18
MA30 00 14
MA30 00 38
MA30 00 12



MA 31

MA31 00 M5
MA31 00 18
MA31 00 14
MA31 00 38
MA31 00 12



MA 32

MA32 00 18
MA32 00 14
MA32 00 38
MA32 00 12



MA 33

MA33 00 18
MA33 00 14
MA33 00 38



MA 34

MA34 00 18
MA34 00 14
MA34 00 38



MA 35

MA35 04 M5
MA35 04 M5 /R
MA35 04 18
MA35 06 M5
MA35 06 M5 /R
MA35 06 18
MA35 06 14
MA35 08 18
MA35 08 14
MA35 08 38
MA35 10 14
MA35 10 38
MA35 12 38
MA35 12 12



MA 36

MA36 04 M5
MA36 04 18
MA36 06 18
MA36 06 14
MA36 08 18
MA36 08 14
MA36 08 38
MA36 10 14
MA36 10 38
MA36 12 38
MA36 12 12



MA 37

MA37 04 04
MA37 06 06
MA37 06 04
MA37 08 08
MA37 08 06
MA37 10 10
MA37 10 08
MA37 12 12



MA 38

MA38 04 M5
MA38 04 18
MA38 04 14
MA38 06 M5
MA38 06 18
MA38 06 14
MA38 08 18
MA38 08 14
MA38 10 38
MA38 12 38
MA38 12 12



MA39 00 04
MA39 00 06
MA39 00 08
MA39 00 10
MA39 00 12
MA39 00 14

MA 39



MA40 00 03
MA40 00 04
MA40 00 06
MA40 00 08
MA40 00 10
MA40 00 12
MA40 00 14

MA 40



MA41 04 M5
MA41 04 18
MA41 06 18
MA41 06 14
MA41 08 18
MA41 08 14

MA 41



MA42 04 M5
MA42 04 18
MA42 06 18
MA42 06 14
MA42 08 18
MA42 08 14

MA 42



MA43 04 04
MA43 04 06
MA43 06 04
MA43 06 06
MA43 06 08
MA43 08 06
MA43 08 08
MA43 10 10

MA 43



MA44 04 04
MA44 04 06
MA44 06 06
MA44 06 08
MA44 08 08
MA44 08 10
MA44 10 10

MA 44



MA45 04 04
MA45 04 06
MA45 06 06
MA45 06 08
MA45 08 08
MA45 08 10
MA45 10 10

MA 45



MA46 04 04
MA46 04 06
MA46 06 06
MA46 06 08
MA46 08 08

MA 46



MA47 04 04
MA47 04 06
MA47 06 06
MA47 06 08
MA47 08 08

MA 47



MA10 04 00
MA10 06 00
MA10 08 00
MA10 10 00

MA 10

AV LINE



Raccordi Automatici per **Alta Temperatura**
High Temperature Push-in Fittings
 Steckverschraubungen für **höheren**
Temperaturbereich



AV 11

AV11 04 18
 AV11 04 14
 AV11 06 18
 AV11 06 14
 AV11 08 18
 AV11 08 14
 AV11 08 38
 AV11 10 14
 AV11 10 38
 AV11 10 12
 AV11 12 14
 AV11 12 38
 AV11 12 12



AV 12

AV12 04 M5
 AV12 04 18
 AV12 04 14
 AV12 06 M5
 AV12 06 18
 AV12 06 14
 AV12 08 18
 AV12 08 14
 AV12 08 38
 AV12 10 14
 AV12 10 38
 AV12 10 12
 AV12 12 14
 AV12 12 38
 AV12 12 12



AV 13

AV13 04 18
 AV13 06 18
 AV13 08 18
 AV13 08 14
 AV13 10 14



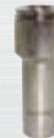
AV 15

AV15 04 18
 AV15 04 14
 AV15 06 18
 AV15 06 14
 AV15 08 18
 AV15 08 14
 AV15 08 38
 AV15 10 14
 AV15 10 38
 AV15 12 38
 AV15 12 12



AV 16

AV16 04 M5
 AV16 04 18
 AV16 04 14
 AV16 06 M5
 AV16 06 18
 AV16 06 14
 AV16 08 18
 AV16 08 14
 AV16 08 38
 AV16 10 14
 AV16 10 38
 AV16 12 14
 AV16 12 38
 AV16 12 12



AV 25

AV25 04 06
 AV25 06 08
 AV25 08 10
 AV25 10 12



AV 26

AV26 04 04
 AV26 06 06
 AV26 06 04
 AV26 08 08
 AV26 08 06
 AV26 10 10
 AV26 10 08
 AV26 12 12



AV27 04 04
AV27 06 06
AV27 08 08
AV27 10 10

AV 27



AV28 04 04
AV28 06 06
AV28 08 08
AV28 10 10
AV28 12 12

AV 28



AV29 04 04
AV29 06 06
AV29 08 08
AV29 10 10
AV29 12 12

AV 29



AV35 04 M5
AV35 04 18
AV35 06 M5
AV35 06 18
AV35 06 14
AV35 08 18
AV35 08 14
AV35 10 14
AV35 10 38
AV35 12 38
AV35 12 12

AV 35



AV37 04 04
AV37 06 06
AV37 08 08
AV37 10 10
AV37 12 12

AV 37

AP LINE



Raccordi Automatici in Ottone Nichelato
 con **Estrattore in Tecnopolimero**
 Brass Push-in Fittings with **Technopolymer Release Ring**
 Steckverschraubungen aus Messing vernickelt und
Polymerlösering



AP12 04 M5
 AP12 04 18
 AP12 06 M5
 AP12 06 18
 AP12 06 14
 AP12 08 18
 AP12 08 14
 AP12 08 38
 AP12 10 14
 AP12 10 38
 AP12 10 12
 AP12 12 14
 AP12 12 38
 AP12 12 12



AP 12



AP 13

AP13 04 18
 AP13 06 18
 AP13 06 14
 AP13 08 18
 AP13 08 14
 AP13 10 14
 AP13 10 38



AP 16

AP16 04 M5
 AP16 04 18
 AP16 06 M5
 AP16 06 18
 AP16 06 14
 AP16 08 18
 AP16 08 14
 AP16 08 38
 AP16 10 14
 AP16 10 38
 AP16 10 12
 AP16 12 14
 AP16 12 38
 AP16 12 12



AP 21

AP21 04 18
 AP21 06 18
 AP21 06 14
 AP21 08 18
 AP21 08 14
 AP21 10 14
 AP21 10 38
 AP21 12 38
 AP21 12 12



AP 24

AP24 04 18
 AP24 06 18
 AP24 06 14
 AP24 08 18
 AP24 08 14
 AP24 10 14
 AP24 10 38
 AP24 12 38
 AP24 12 12



AP 25

AP25 04 06
 AP25 04 08
 AP25 06 04
 AP25 06 08
 AP25 06 10
 AP25 08 06
 AP25 08 10
 AP25 08 12
 AP25 10 12
 AP25 10 14
 AP25 12 14



AP 26

AP26 04 04
 AP26 06 06
 AP26 06 04
 AP26 08 08
 AP26 08 06
 AP26 10 10
 AP26 10 08
 AP26 12 12



AP27 04 04
AP27 06 06
AP27 08 08
AP27 10 10
AP27 12 12

AP 27



AP28 04 04
AP28 06 06
AP28 08 08
AP28 10 10
AP28 12 12

AP 28



AP29 04 04
AP29 06 06
AP29 08 08
AP29 10 10
AP29 12 12

AP 29



AP35 04 M5
AP35 04 M5/R
AP35 04 18
AP35 06 M5/R
AP35 06 18
AP35 06 14
AP35 08 18
AP35 08 14
AP35 10 14
AP35 10 38
AP35 12 38
AP35 12 12

AP 35



AP37 04 04
AP37 06 06
AP37 06 04
AP37 08 08
AP37 08 06
AP37 10 10
AP37 10 08
AP37 12 12

AP 37

MB LINE

Raccordi Automatici in **Tecnopolimero**
Technopolymer Push-in Fittings
 Steckverschraubungen aus **Polymer**



AP12 04 M5
 AP12 04 18
 AP12 06 M5
 AP12 06 18
 AP12 06 14
 AP12 08 18
 AP12 08 14
 AP12 08 38
 AP12 10 14
 AP12 10 38
 AP12 10 12
 AP12 12 14
 AP12 12 38
 AP12 12 12



AP 12



AP 13

AP13 04 18
 AP13 06 18
 AP13 06 14
 AP13 08 18
 AP13 08 14
 AP13 10 14
 AP13 10 38



MB 12

MB12 04 18
 MB12 06 18
 MB12 06 14
 MB12 08 18
 MB12 08 14
 MB12 08 38
 MB12 10 14
 MB12 10 38



MB 13

MB13 04 18
 MB13 06 18
 MB13 06 14
 MB13 08 18
 MB13 08 14
 MB13 08 38
 MB13 10 14
 MB13 10 38



MB 14

MB14 04 04
 MB14 06 06
 MB14 08 08
 MB14 10 10
 MB14 12 12



MB 15

MB15 04 04
 MB15 06 06
 MB15 08 08
 MB15 10 10
 MB15 12 12



MB 16

MB16 04 18
 MB16 04 14
 MB16 06 18
 MB16 06 14
 MB16 08 18
 MB16 08 14
 MB16 08 38
 MB16 10 14
 MB16 10 38
 MB16 12 38
 MB16 12 12



MB17 04 18
MB17 04 14
MB17 06 18
MB17 06 14
MB17 08 18
MB17 08 14
MB17 08 38
MB17 10 14
MB17 10 38

MB 17



MB 18

MB18 04 M5
MB18 04 18
MB18 04 14
MB18 06 M5
MB18 06 18
MB18 06 14
MB18 08 18
MB18 08 14
MB18 08 38
MB18 10 14
MB18 10 38
MB18 12 38
MB18 12 12



MB 19

MB19 04 M5
MB19 04 18
MB19 04 14
MB19 06 M5
MB19 06 18
MB19 06 14
MB19 08 18
MB19 08 14
MB19 08 38
MB19 10 14
MB19 10 38



MB 20

MB20 04 M5
MB20 04 18
MB20 06 M5
MB20 06 18
MB20 06 14
MB20 08 18
MB20 08 14
MB20 08 38
MB20 10 14
MB20 10 38



MB 21

MB21 04 18
MB21 04 14
MB21 06 18
MB21 06 14
MB21 08 18
MB21 08 14
MB21 08 38
MB21 10 14
MB21 10 38
MB21 12 38
MB21 12 12



MB 22

MB22 04 M5
MB22 04 18
MB22 04 14
MB22 06 M5
MB22 06 18
MB22 06 14
MB22 08 18
MB22 08 14
MB22 08 38
MB22 10 14
MB22 10 38
MB22 12 38
MB22 12 12



MB 23

MB23 04 18
MB23 04 14
MB23 06 18
MB23 06 14
MB23 08 18
MB23 08 14
MB23 08 38
MB23 10 14
MB23 10 38



MB 24

MB24 04 M5
MB24 04 18
MB24 04 14
MB24 06 M5
MB24 06 18
MB24 06 14
MB24 08 18
MB24 08 14
MB24 08 38
MB24 10 14
MB24 10 38



MB 25

MB25 04 04
MB25 06 06
MB25 08 08
MB25 10 10
MB25 12 12
MB25 06 04
MB25 08 06
MB25 10 08
MB25 12 08
MB25 12 10



MB 26

MB26 04 06
MB26 04 08
MB26 04 10
MB26 06 08
MB26 06 10
MB26 06 12
MB26 08 10
MB26 08 12
MB26 10 12



MB 27

MB27 06 04
MB27 08 06



MB 28

MB28 04 M5
MB28 04 M5/R
MB28 04 18
MB28 06 M5/R
MB28 06 18
MB28 06 14
MB28 08 18
MB28 08 14
MB28 08 38
MB28 10 14
MB28 10 38



MB 29

MB29 04 04
MB29 06 06
MB29 08 08
MB29 10 10
MB29 12 12



MB 30

MB30 04 04
MB30 04 06
MB30 04 08
MB30 06 06
MB30 08 08



MB 31

MB31 04 M5
MB31 04 18
MB31 04 14
MB31 06 18
MB31 06 14
MB31 08 18
MB31 08 14
MB31 08 38



MB 32

MB32 04 00
MB32 06 00
MB32 08 00
MB32 10 00
MB32 12 00



MB 33

MB33 04 00
MB33 06 00
MB33 08 00
MB33 10 00
MB33 12 00



MB 35

MB35 04 06
MB35 06 05
MB35 08 04



MB 42

MB42 00 M5
MB42 00 18
MB42 00 14
MB42 00 38
MB42 00 12



MB 43

MB43 04 06
MB43 04 08



MB 44

MB44 04 18
MB44 04 14



MB46 04 04
MB46 06 06
MB46 08 08
MB46 10 10

MB 46



MB48 04 04
MB48 06 06
MB48 08 08
MB48 10 10
MB48 12 12

MB 48



MB49 04 04
MB49 06 06
MB49 08 08
MB49 10 10
MB49 12 12

MB 49



MB10 04 00
MB10 06 00
MB10 08 00
MB10 10 00

MB 10

HP LINE

Raccordi Automatici per **Lubrificazione (250 bar)**
High Pressure Push-in Fittings (250 bar)
Hochdrucksteckverschraubungen (250 bar)



HP 11

HP11 04 18
 HP12 04 M6x0,75
 HP11 04 M6x1
 HP11 04 M8x1
 HP11 04 M10x1
 HP11 06 18
 HP11 06 14
 HP11 06 M6x1
 HP11 06 M8x1
 HP11 06 M10x1



HP 14

HP14 04 18
 HP14 04 M6x1
 HP14 04 M8x1
 HP14 04 M10x1
 HP14 06 18
 HP14 06 M6x1
 HP14 06 M8x1
 HP14 06 M10x1



HP 18

HP18 04 18
 HP18 04 M6x0,75
 HP18 04 M6x1
 HP18 04 M8x1
 HP18 04 M10x1
 HP18 06 18
 HP18 06 14
 HP18 06 M6x1
 HP18 06 M8x1
 HP18 06 M10x1



HP 11 - NR

HP11 06 M10x1 NR

MP LINE

Raccordi Automatici per **Lubrificazione (80 bar)**
Medium Pressure Push-in Fittings (80 bar)
Mitteldrucksteckverschraubungen (80 bar)



MP 11

MP11 04 18
 MP11 04 M6x1
 MP11 0 4 M8x1
 MP11 04 M10x1
 MP11 06 18
 MP11 06 M6x1
 MP11 06 M8x1
 MP11 06 M10x1



MP 14

MP14 04 18
 MP14 04 M6x1
 MP14 04 M8x1
 MP14 04 M10x1
 MP14 06 18
 MP14 06 M6x1
 MP14 06 M8x1
 MP14 06 M10x1



MP 15

MP15 04 18
 MP15 04 M6x1
 MP15 04 M8x1
 MP15 04 M10x1
 MP15 06 18
 MP15 06 M6x1
 MP15 06 M8x1
 MP15 06 M10x1



MP 26

MP26 04 04
 MP26 06 06

MM LINE

Raccordi Automatici per la **Nebulizzazione**
Misting Push-in Fittings
Zerstäubungverschraubungen



MM11 1/4 1/4
 MM11 3/8 1/4
 MM11 3/8 3/8

MM 11



MM 26



MM26 1/4 1/4
 MM26 1/4 3/8
 MM26 3/8 3/8

MM 28



MM28 1/4 1/4
 MM28 3/8 3/8

MM 29



MM29 1/4 1/4
 MM29 3/8 3/8

MM 40



MM40 00 1/4
 MM40 00 3/8

MM 60



MM60 1/4 1/4
 MM60 3/8 3/8

MM 61



MM61 00 1/4
 MM61 00 3/8



MM 99

MM99 10-24 ø0,15
 MM99 10-24 ø0,20
 MM99 10-24 ø0,30
 MM99 10-24 ø0,40



MX LINE

Raccordi **Automatici** in Acciaio Inox **316 L**
316 L Stainless Steel **Push-in** Fittings
Steckverschraubungen aus Edelstahl **1.4404**



MX 11

MX11 04 18
 MX11 04 14
 MX11 06 18
 MX11 06 14
 MX11 08 18
 MX11 08 14
 MX11 10 14
 MX11 10 38
 MX11 12 38
 MX11 12 12



MX 12

MX12 04 M5
 MX12 04 18
 MX12 06 18
 MX12 06 14
 MX12 08 18
 MX12 08 14
 MX12 10 14
 MX12 10 38
 MX12 12 38
 MX12 12 12



MX 14

MX14 04 18
 MX14 06 18
 MX14 06 14
 MX14 08 18
 MX14 08 14
 MX14 10 14



MX 15

MX15 04 18
 MX15 06 18
 MX15 06 14
 MX15 08 18
 MX15 08 14
 MX15 10 14
 MX15 10 38
 MX15 12 38
 MX15 12 12



MX 16

MX16 04 M5
 MX16 04 18
 MX16 06 18
 MX16 06 14
 MX16 08 18
 MX16 08 14
 MX16 10 14
 MX16 10 38
 MX16 12 38
 MX16 12 12



MX 20

MX20 04 18
 MX20 06 18
 MX20 06 14
 MX20 08 18
 MX20 08 14
 MX20 10 14
 MX20 10 38



MX 21

MX21 04 M5
 MX21 04 18
 MX21 06 18
 MX21 06 14
 MX21 08 18
 MX21 08 14
 MX21 10 14
 MX21 10 38



MX25 04 06
MX25 06 08
MX25 08 10

MX 25



MX26 04 04
MX26 06 06
MX26 06 04
MX26 08 08
MX26 08 06
MX26 10 10
MX26 12 12

MX 26



MX27 04 04
MX27 06 06
MX27 08 08
MX27 10 10
MX27 12 12

MX 27



MX 28

MX28 04 04
MX28 06 06
MX28 08 08
MX28 10 10
MX28 12 12



MX 29

MX29 04 04
MX29 06 06
MX29 08 08
MX29 10 10
MX29 12 12



MX 30

MX30 00 18
MX30 00 14
MX30 00 38
MX30 00 12



MX 31

MX31 00 18
MX31 00 14
MX31 00 38
MX31 00 12



MX 35

MX35 04 18
MX35 06 18
MX35 06 14
MX35 08 18
MX35 08 14
MX35 10 14
MX35 10 38
MX35 12 38
MX35 12 12



MX INC

CX LINE

Raccordi a **Calzamento** in Acciaio Inox **316 L**
316 L Stainless Steel **Push-on** Fittings
Schnellverschraubungen aus Edelstahl **1.4404**



CX10 06 10
 CX10 08 12
 CX10 10 14

CX 10



CX11 06 18
 CX11 06 14
 CX11 08 18
 CX11 08 14
 CX11 10 14
 CX11 10 38

CX 11



CX14 06 18
 CX14 06 14
 CX14 08 18
 CX14 08 14
 CX14 10 14

CX 14



CX20 06 18
 CX20 06 14
 CX20 08 18
 CX20 08 14
 CX20 10 14

CX 20



CX23 06 18
 CX23 06 14
 CX23 08 18
 CX23 08 14
 CX23 10 14

CX 23



CX26 06 06
 CX26 08 08
 CX26 10 10

CX 26



CX28 06 06
 CX28 08 08
 CX28 10 10

CX 28



CX29 06 06
 CX29 08 08
 CX29 10 10

CX 29

OX LINE

Raccordi ad **Ogiva** in Acciaio Inox **316 L**
316 L Stainless Steel **Compression** Fittings
Schneidringverschraubungen aus Edelstahl **1.4404**



OX 10

OX10 00 04
 OX10 00 06
 OX10 00 08
 OX10 00 10
 OX10 00 12



OX 11

OX11 04 18
 OX11 06 18
 OX11 06 14
 OX11 08 18
 OX11 08 14
 CX11 10 14
 CX11 10 38
 CX11 12 38
 CX11 12 12



OX 13

OX13 06 18
 OX13 08 14
 OX13 10 14
 OX13 10 38
 CX13 12 38
 CX13 12 12



OX 14

OX14 04 18
 OX14 06 18
 OX14 06 14
 OX14 08 14
 CX14 10 14
 CX14 10 38
 CX14 12 38
 CX14 12 12



OX 20

OX20 04 18
 OX20 06 18
 OX20 06 14
 OX20 08 14
 CX20 10 14
 CX20 10 38
 CX20 12 38
 CX20 12 12



OX 22

OX22 00 04
 OX22 00 06
 OX22 00 08
 OX22 00 10
 OX22 00 12



OX 26

OX26 04 00
 OX26 06 00
 OX26 08 00
 OX26 10 00
 CX26 12 00



OX 28

OX28 04 00
 OX28 06 00
 OX28 08 00
 OX28 10 00
 CX28 12 00



OX 29

OX29 04 00
 OX29 06 00
 OX29 08 00
 OX29 10 00
 CX29 12 00

GX LINE

Giunti in Acciaio Inox 316 L
316 L Stainless Steel Couplings
Kupplungen aus Edelstahl 1.4404



MULTI PROFILE



GX10-11

GX 10-11 00 14
GX 10-11 00 38



GX10-12

GX 10-12 00 14
GX 10-12 00 38

EUROPEAN PROFILE - DN 7,5



GX10-20

GX 10-20 00 14
GX 10-20 00 38



GX10-21

GX 10-21 00 14
GX 10-21 00 38

SAFETY EUROPEAN PROFILE - DN 7,5



GX46-10

GX46-10 00 14
GX46-10 00 38
GX46-10 00 12



GX46-12

GX46-12 00 14
GX46-12 00 38
GX46-12 00 12



GX46-13

GX46-13 06 00
GX46-13 09 00
GX46-13 13 00

VX LINE

Raccordi a **Funzione** in Acciaio Inox **316 L**
316 L Stainless Steel **Function** Fittings
Funktionsverschraubungen aus Edelstahl **1.4404**



VX 15 00 18
 VX 15 00 14

VX 15



VX 18 04 18
 VX 18 06 18
 VX 18 06 14
 VX 18 08 18
 VX 18 10 14
 VX 18 10 38

VX 18



VX 21 00 18
 VX 21 00 14

VX 21



VX 22 00 14
 VX 22 00 38
 VX 22 00 12

VX 22



VX 23 00 18
 VX 23 00 14
 VX 23 00 38
 VX 23 00 12

VX 23

RX LINE

Raccordi **Standard** in Acciaio Inox **316 L**
316 L Stainless Steel **Standard** Fittings
Standardverschraubungen aus Edelstahl **1.4404**



RX 12

RX12 18 18
 RX12 18 14
 RX12 14 14
 RX12 14 38
 RX12 38 38
 RX12 38 12
 RX12 12 12



RX 13

RX13 00 18
 RX13 00 14
 RX13 00 38
 RX13 00 12



RX 14

RX14 18 14
 RX14 18 38
 RX14 18 12
 RX14 14 38
 RX14 14 12
 RX14 38 12



RX 15

RX15 M5 18
 RX15 18 14
 RX15 14 38



RX 21

RX21 18 18
 RX21 14 14
 RX21 38 38
 RX21 12 12



RX 22

RX22 18 18
 RX22 14 14
 RX22 38 38
 RX22 12 12



RX 23

RX23 18 18
 RX23 14 14
 RX23 38 38
 RX23 12 12



RX24 18 18
RX24 14 14
RX24 38 38
RX24 12 12

RX 24



RX35 18 18
RX35 14 14
RX35 38 38
RX35 12 12

RX 35



RX42 00 18
RX42 00 14
RX42 00 38
RX42 00 12

RX 42



RX43 00 18
RX43 00 14
RX43 00 38
RX43 00 12

RX 43



RX46 00 18
RX46 00 14
RX46 00 38
RX46 00 12

RX 46

RA LINE

Raccordi **Standard** in **Ottone** Nichelato e Tubi Flessibili
Brass Nickelplated **Standard** Fittings and Flexible Hoses
Standardverschraubungen aus **Messing** vernickelt und
 flexible Schläuche



RA 11

RA11 M5 M5
 RA11 M5 18
 RA11 18 18
 RA11 18 14
 RA11 18 38
 RA11 14 14
 RA11 14 38
 RA11 14 12
 RA11 38 38
 RA11 38 12
 RA11 12 12



RA 12

RA12 18 18
 RA12 18 14
 RA12 18 38
 RA12 14 14
 RA12 14 38
 RA12 14 12
 RA12 38 38
 RA12 38 12
 RA12 12 12
 RA12 12 34
 RA12 34 34



RA 13

RA13 00 M5
 RA13 00 18
 RA13 00 14
 RA13 00 38
 RA13 00 12



RA 14

RA14 18 14
 RA14 18 38
 RA14 18 12
 RA14 14 38
 RA14 14 12
 RA14 38 12
 RA14 12 34



RA 15

RA15 M5 18
 RA15 18 14
 RA15 18 38
 RA15 18 12
 RA15 14 38
 RA15 14 12
 RA15 38 12



RA 16

RA16 18 18
 RA16 18 14
 RA16 14 14
 RA16 14 38
 RA16 14 12
 RA16 38 38
 RA16 38 12
 RA16 12 12



RA 17

RA17 M5 18
 RA17 18 18
 RA17 18 14
 RA17 14 14
 RA17 14 38
 RA17 14 12
 RA17 38 38
 RA17 38 12
 RA17 12 12



RA18 M5 18
RA18 18 14
RA18 18 38
RA18 14 38
RA18 14 12
RA18 18 12

RA 18



RA19 00 M5
RA19 00 18
RA19 00 14
RA19 00 38
RA19 00 12

RA 19



RA43 00 18
RA43 00 14
RA43 00 38
RA43 00 12

RA 43



RA20 00 18
RA20 00 14
RA20 00 38
RA20 00 12

RA 20



RA21 18 18
RA21 14 14
RA21 38 38
RA21 12 12

RA 21



RA22 18 18
RA22 14 14
RA22 38 38
RA22 12 12

RA 22



RA23 18 18
RA23 14 14
RA23 38 38
RA23 12 12

RA 23



RA24 18 18
RA24 14 14
RA24 38 38
RA24 12 12

RA 24



RA25 18 18
RA25 14 14
RA25 38 38
RA25 12 12

RA 25



RA26 18 18
RA26 14 14
RA26 38 38

RA 26



RA27 M5 M5
RA27 18 18
RA27 14 14

RA 27



RA28 M5 M5
RA28 18 18
RA28 14 14

RA 28



RA29 00 M5
RA29 00 18
RA29 00 14
RA29 00 38
RA29 00 12

RA 29



RA30 03 M5
RA30 3,5 M5
RA30 4,5 M5
RA30 7,5 18
RA30 7,5 14
RA30 8,5 18
RA30 9,5 18
RA30 9,5 14
RA30 9,5 38
RA30 12,5 14
RA30 12,5 38
RA30 12,5 12
RA30 17,5 38
RA30 17,5 12

RA 30



RA31 00 18
RA31 00 14
RA31 00 38
RA31 00 12
RA31 00 M10x1
RA31 00 M12x1
RA31 00 M14x1
RA31 00 M16x1
RA31 00 M20x1,5

RA 31



RA35 18 18
RA35 14 14
RA35 38 38
RA35 12 12

RA 35



RA36 18 18
RA36 14 14
RA36 38 38
RA36 12 12

RA 36



RA38 18 14

RA 38



RA39 18 22
RA39 18 42
RA39 14 35
RA39 14 51

RA 39



RA40 00 18
RA40 00 14
RA40 00 38
RA40 00 12

RA 40



RA41 00 18
RA41 00 14
RA41 00 38
RA41 00 12

RA 41



RA42 00 M5
RA42 00 M5/R
RA42 00 18
RA42 00 14
RA42 00 38
RA42 00 12

RA 42



RA44 00 M5
RA44 00 18
RA44 00 14
RA44 00 38
RA44 00 12

RA 44



RA45 18 18
RA45 14 14

RA 45



RA46 00 18
RA46 00 14
RA46 00 38
RA46 00 12

RA 46



RA33 130

RA 33-130



RA33 350

RA 33-350



RA33-SL

RA 33-SL



RA34 12
RA34 25

RA 34



RA37 12
RA37 25

RA 37



TUBI

POLIAMMIDE 11 (PA11)
POLIURETANO C98 (PU)
POLIAMMIDE 6 (PA6)
POLIAMMIDE 6.6 (PA6.6)
POLIETILENE (LDPE)
P.T.F.E.
TRUBKA ИЗ ПОЛИАМИДА 11 (PA11)
TRUBKA ИЗ ПОЛИУРЕТАНА C98(PU)
TRUBKA ИЗ ПОЛИАМИДА 6 (PA6)
TRUBKA ИЗ ПОЛИАМИДА 6.6 (PA6.6)
TRUBKA ИЗ ПОЛИЭТИЛЕНА (ПЭНП)
TRUBKA ИЗ ТЕФЛОНА

MC LINE

Raccordi a **Calzamento** in **Ottone** Nichelato
Brass Nickel Plated **Push-on** Fittings
Überwurfmutterverschraubungen aus
Messing vernickelt



MC 11

MC11 04 18
 MC11 05 18
 MC11 06 18
 MC11 06 14
 MC11 06 38
 MC11 08 18
 MC11 08 14
 MC11 08 38
 MC11 10 18
 MC11 10 14
 MC11 10 38
 MC11 10 12
 MC11 12 38
 MC11 12 12
 MC11 15 12



MC 12

MC12 04 M5
 MC12 04 18
 MC12 05 M5
 MC12 05 18
 MC12 06 M5
 MC12 06 18
 MC12 06 14
 MC12 06 38
 MC12 08 18
 MC12 08 14
 MC12 08 38
 MC12 10 18
 MC12 10 14
 MC12 10 38
 MC12 10 12
 MC12 12 38
 MC12 12 12
 MC12 15 12



MC 13

MC13 05 18
 MC13 06 18
 MC13 06 14
 MC13 08 18
 MC13 08 14
 MC13 08 38
 MC13 10 14
 MC13 10 38
 MC13 12 38



MC 14

MC14 05 05
 MC14 06 06
 MC14 08 08
 MC14 10 10
 MC14 12 12
 MC14 15 15



MC 15

MC15 05 05
 MC15 06 06
 MC15 08 08
 MC15 10 10
 MC15 12 12
 MC15 15 15



MC 16

MC16 04 M5
 MC16 04 18
 MC16 05 18
 MC16 06 18
 MC16 06 14
 MC16 06 38
 MC16 08 18
 MC16 08 14
 MC16 08 38
 MC16 10 18
 MC16 10 14
 MC16 10 38
 MC16 12 38
 MC16 12 12
 MC16 15 12



MC 17

MC17 05 18
 MC17 06 18
 MC17 06 14
 MC17 08 18
 MC17 08 14
 MC17 10 14
 MC17 12 38



MC18 05 05
MC18 06 06
MC18 08 08
MC18 10 10
MC18 12 12
MC18 15 15

MC 18



MC19 05 05
MC19 06 06
MC19 08 08
MC19 10 10
MC19 12 12
MC19 15 15

MC 19



MC20 05 18
MC20 06 18
MC20 06 14
MC20 08 18
MC20 08 14
MC20 10 14
MC20 10 38
MC20 12 38
MC20 12 12
MC20 15 12

MC 20



MC21 05 18
MC21 06 18
MC21 06 14
MC21 08 18
MC21 08 14
MC21 10 14
MC21 10 38
MC21 12 38
MC21 12 12
MC21 15 12

MC 21



MC22 05 05
MC22 06 06
MC22 08 08
MC22 10 10

MC 22



MC23 04 M5
MC23 04 M5/R
MC23 04 18
MC23 05 M5
MC23 05 M5/R
MC23 05 18
MC23 06 M5
MC23 06 M5/R
MC23 06 18
MC23 06 14
MC23 08 18
MC23 08 14
MC23 08 38
MC23 10 14
MC23 10 38

MC 23



MC24 05 M5
MC24 05 18
MC24 06 M5
MC24 06 18
MC24 06 14
MC24 08 18
MC24 08 14
MC24 08 38
MC24 10 14
MC24 10 38

MC 24



MC27 04 07
MC27 05 08
MC27 06 08
MC27 06 10
MC27 08 12
MC27 10 14
MC27 12 16
MC27 15 20

MC 27



MC29 06 18
MC29 06 14
MC29 08 18
MC29 08 14
MC29 10 14
MC29 10 38

MC 29



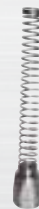
MC30 06 18
MC30 06 14
MC30 08 18
MC30 08 14
MC30 10 14
MC30 10 38

MC 30



MC31 06 18
MC31 06 14
MC31 08 18
MC31 08 14
MC31 10 14
MC31 10 38

MC 31



MC32 06 04
MC32 08 06
MC32 10 08

MC 32



MC34 04 M5
MC34 04 18
MC34 05 M5
MC34 05 18
MC34 06 M5
MC34 06 14
MC34 06 18
MC34 08 14
MC34 08 18
MC34 08 38
MC34 10 14
MC34 10 38

MC 34



MC36 05 M5
MC36 05 18
MC36 06 M5
MC36 06 18
MC36 06 14
MC36 08 18
MC36 08 14
MC36 08 38
MC36 10 14
MC36 10 38

MC 36

MO LINE

Raccordi ad **Ogiva** in **Ottone Nichelato**
Brass Nickel Plated Olive Fittings
Schneidringverschraubungen aus **Messing vernickelt**



MO 11

MO11 04 18
 MO11 05 18
 MO11 06 18
 MO11 06 14
 MO11 08 18
 MO11 08 14
 MO11 08 38
 MO11 10 14
 MO11 10 38
 MO11 12 38
 MO11 12 12
 MO11 15 12



MO 12

MO12 04 M5
 MO12 04 18
 MO12 05 18
 MO12 06 18
 MO12 06 14
 MO12 08 18
 MO12 08 14
 MO12 10 14
 MO12 10 38
 MO12 12 38
 MO12 12 12
 MO12 15 12



MO 13

MO13 04 18
 MO13 05 18
 MO13 06 18
 MO13 06 14
 MO13 08 18
 MO13 08 14
 MO13 10 14
 MO13 10 38



MO 14

MO14 04 04
 MO14 05 05
 MO14 06 06
 MO14 08 08
 MO14 10 10
 MO14 12 12
 MO14 15 15



MO 15

MO15 04 04
 MO15 05 05
 MO15 06 06
 MO15 08 08
 MO15 10 10
 MO15 12 12
 MO15 15 15



MO 16

MO16 04 18
 MO16 05 18
 MO16 06 18
 MO16 06 14
 MO16 08 18
 MO16 08 14
 MO16 10 14
 MO16 10 38
 MO16 12 38
 MO16 12 12
 MO16 15 12



MO 17

MO17 04 04
 MO17 05 05
 MO17 06 06
 MO17 08 08
 MO17 10 10
 MO17 12 12
 MO17 15 15



MO18 04 04
MO18 05 05
MO18 06 06
MO18 08 08
MO18 10 10
MO18 12 12
MO18 15 15

MO 18



MO 19

MO19 04 18
MO19 05 18
MO19 06 18
MO19 06 14
MO19 08 18
MO19 08 14
MO19 10 14
MO19 10 14
MO19 10 38
MO19 12 38
MO19 12 12
MO19 15 12



MO 20

MO20 04 18
MO20 05 18
MO20 06 18
MO20 06 14
MO20 08 18
MO20 08 14
MO20 10 14
MO20 10 38
MO20 12 38
MO20 12 12
MO20 15 12



MO 21

MO21 04 08
MO21 05 10
MO21 06 10
MO21 08 12
MO21 10 16
MO21 12 18
MO21 15 22



MO 22

MO22 04 65
MO22 05 75
MO22 06 75
MO22 08 75
MO22 10 95
MO22 12 95
MO22 15 10



MO 23

MO23 06 12
MO23 08 14
MO23 10 16
MO23 12 18
MO23 15 20



MO 24

MO24 04 18
MO24 05 18
MO24 06 18
MO24 06 14
MO24 08 18
MO24 08 14
MO24 10 14
MO24 10 38
MO24 12 38
MO24 12 12



MO25 06 18
MO25 06 14
MO25 08 18
MO25 08 14

MO 25



MO 26

MO26 08 06
MO26 10 06
MO26 10 08
MO26 12 08

GU LINE

Giunti e Multiconnettori
Couplings and Multiple Connectors
Kupplungen und Vielfachverbinder



DN 2,5



GU20-11 00 M5
GU20-11 00 18

GU 20 - 11



GU20-12 00 M5
GU20-12 00 18

GU 20 - 12



GU20-13 03 00
GU20-13 04 00

GU 20 - 13



GU20-15 04 00
GU20-15 05 00
GU20-15 06 00

GU 20 - 15



GU20-20 00 M5
GU20-20 00 18

GU 20 - 20



GU20-21 00 M5
GU20-21 00 18

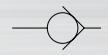
GU 20 - 21



GU20-22 03 00
GU20-22 04 00

GU 20 - 22

DN 5



GU20-23 04 00
GU20-23 05 00
GU20-23 06 00

GU 20 - 23



GU21-11 00 18
GU21-11 00 14

GU 21 - 11



GU 21 - 12



GU21-12 00 18
GU21-12 00 14

GU 21 - 13



GU21-13 04 00
GU21-13 06 00

GU 21 - 15



GU21-15 06 00
GU21-15 08 00

GU 21 - 20



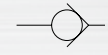
GU21-20 00 18
GU21-20 00 14

GU 21 - 21

GU21-21 00 18
GU21-21 00 14



EUROPEAN PROFILE DN 7,5



GU21-22 04 00
GU21-22 06 00

GU 21 - 22



GU21-23 06 00
GU21-23 08 00

GU 21 - 23



GU21-24 06 00
GU21-24 08 00

GU 21 - 24



GU26-11 00 14
GU26-11 00 38
GU26-11 00 12

GU 26 - 11



GU 26 - 12



GU26-12 00 14
GU26-12 00 38
GU26-12 00 12

GU 26 - 13



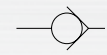
GU26-13 06 00
GU26-13 09 00
GU26-13 13 00

GU 26 - 15

GU26-15 08 00
GU26-15 10 00



MULTI PROFILE



GU26-20 00 14
GU26-20 00 38
GU26-20 00 12

GU 26 - 20



GU 26 - 21



GU 26 - 22

GU26-22 06 00
GU26-22 08 00
GU26-22 09 00
GU26-22 10 00
GU26-22 13 00



GU 26 - 23

GU26-23 06 00
GU26-23 08 00
GU26-23 10 00



GU 26 - 24

GU26-24 06 00
GU26-24 08 00
GU26-24 10 00



GU 10 - 11

GU10-11 00 14
GU10-11 00 38
GU10-11 00 12



GU 10 - 12

GU10-12 00 14
GU10-12 00 38
GU10-12 00 12



MULTI PROFILE



ITALIAN PROFILE



GU10-13 06 00
GU10-13 09 00
GU10-13 13 00

GU 10 - 13



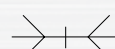
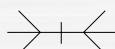
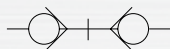
GU11-20 00 14
GU11-20 00 38
GU11-20 00 12

GU 11 - 20



GU11-21 00 14
GU11-21 00 38

GU 11 - 21



MULTICONNETTOR
MULTIPLE CONNECTORS
VIELFACHVERBINDER



A013 06 06
A013 08 04

A013



A113 04 12
A113 06 10
A113 08 08

A213 04 20
A213 06 14
A213 08 10

A113 / A213



B113 04 12
B113 06 10
B113 08 08

B113

GU SAFETY LINE

Giunti di **Sicurezza**
Safety Couplings
Sicherheitskupplung



ISO 6150 C-10 PROFILE DN 5,5



GU 41-10

GU41-10 00 14
 GU41-10 00 38
 GU41-10 00 12
 GU41-11 00 14
 GU41-11 00 38
 GU41-11 00 12



GU 41-12

GU41-12 00 14
 GU41-12 00 38
 GU41-12 00 12



GU 41-13

GU41-13 06 00
 GU41-13 08 00
 GU41-13 10 00



GU 41-20

GU41-20 00 14
 GU41-20 00 38
 GU41-20 00 12



GU 41-21

GU41-21 00 14
 GU41-21 00 38
 GU41-21 00 12



GU 41-22

GU41-22 06 00
 GU41-22 08 00
 GU41-22 10 00

ISO 6150 B-12 PROFILE DN 5,5



GU42-10 00 14
GU42-10 00 38
GU42-10 00 12

GU 42 - 10



GU42-12 00 14
GU42-12 00 38
GU42-12 00 12

GU 42 - 12



GU42-13 06 00
GU42-13 08 00
GU42-13 10 00

GU 42 - 13



GU42-20 00 14
GU42-20 00 38
GU42-20 00 12

GU 42 - 20



GU42-21 00 14
GU42-21 00 38
GU42-21 00 12

GU 42 - 21

ISO 6150 C-14 PROFILE DN 8



GU43-10 00 14
GU43-10 00 38
GU43-10 00 12

GU 43 - 10



GU43-12 00 14
GU43-12 00 38
GU43-12 00 12

GU 43 - 12



GU43-13 08 00
GU43-13 10 00
GU43-13 13 00

GU 43 - 13



GU43-20 00 14
GU43-20 00 38
GU43-20 00 12

GU 43 - 20



GU43-21 00 14
GU43-21 00 38
GU43-21 00 12

GU 43 - 21



GU43-22 08 00
GU43-22 10 00
GU43-22 13 00

GU 43 - 22

ISO 6150 B-15 PROFILE DN 8



GU44-10 00 38
GU44-10 00 12

GU 44 - 10



GU44-12 00 38
GU44-12 00 12

GU 44 - 12



GU44-13 08 00
GU44-13 10 00
GU44-13 13 00

GU 44 - 13



GU44-20 00 14
GU44-20 00 38
GU44-20 00 12

GU 44 - 20



GU44-21 00 14
GU44-21 00 38
GU44-21 00 12

GU 44 - 21

ARO PROFILE DN 5,5



GU45-10 00 14
GU45-10 00 38
GU45-10 00 12

GU 45 - 10



GU45-12 00 14
GU45-12 00 38
GU45-12 00 12

GU 45 - 12



GU45-13 06 00
GU45-13 08 00
GU45-13 10 00
GU45-13 09 00
GU45-13 13 00

GU 45 - 13

EUROPEAN PROFILE DN 7,5



GU46-10 00 14
GU46-10 00 38
GU46-10 00 12

GU 46 - 10



GU46-12 00 14
GU46-12 00 38
GU46-12 00 12

GU 46 - 12

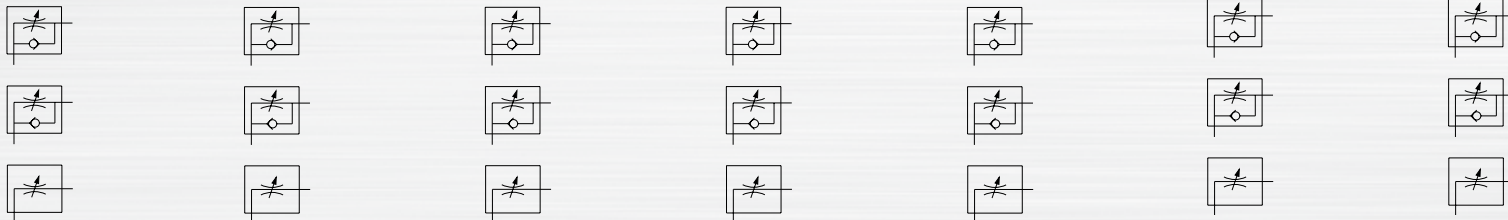


GU46-13 06 00
GU46-13 08 00
GU46-13 09 00
GU46-13 10 00
GU46-13 13 00

GU 46-13

MV LINE

Raccordi a **Funzione**
Function Fittings
Funktionverschraubungen



MV 15

MV15 00 M5
 MV15 00 18
 MV15 00 14
 MV15 00 38
 MV15 00 12



MV 16

MV16 00 M5
 MV16 0018
 MV16 0014
 MV16 00 38
 MV16 0012



MV 17

MV17 00 M5
 MV17 00 18
 MV17 00 14
 MV17 00 38
 MV17 00 12



MV 40

MV40 00 M5
 MV40 00 18
 MV40 00 14
 MV40 00 38
 MV40 00 12



MV 18

MV18 04 M5
 MV18 04 18
 MV18 06 18
 MV18 06 14
 MV18 08 18
 MV18 08 14
 MV18 08 38
 MV18 10 14
 MV18 10 38



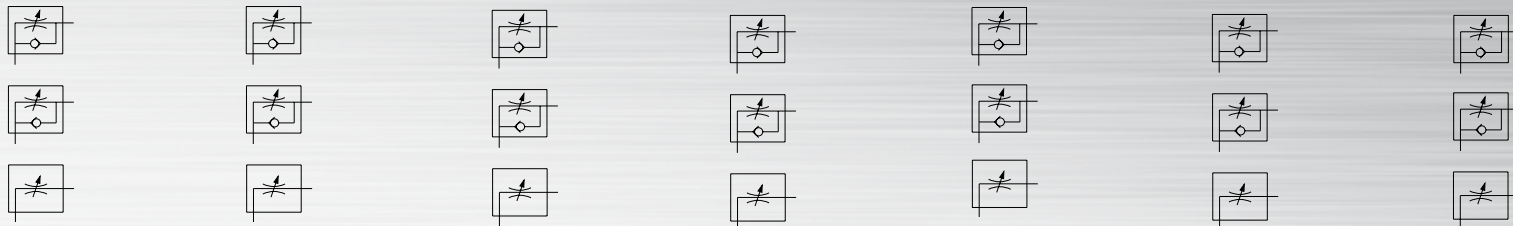
MV 41

MV41 04 M5
 MV41 04 18
 MV41 06 18
 MV41 06 14
 MV41 08 18
 MV41 08 14
 MV41 08 38
 MV41 10 14
 MV41 10 38



MV 20

MV20 04 M5
 MV20 05 M5
 MV20 05 18
 MV20 06 M5
 MV20 06 18
 MV20 06 14
 MV20 08 18
 MV20 08 14
 MV20 08 38
 MV20 10 14
 MV20 10 38



MV42 04 M5
MV42 05 M5
MV42 05 18
MV42 06 M5
MV42 06 18
MV42 06 14
MV42 08 18
MV42 08 14
MV42 08 38
MV42 10 14
MV42 10 38

MV 42



MV38 04 M5
MV38 04 18
MV38 06 M5
MV38 06 18
MV38 06 14
MV38 08 18
MV38 08 14
MV38 08 38
MV38 10 14
MV38 10 38

MV 38



MV36 04 M5
MV36 04 18
MV36 06 M5
MV36 06 18
MV36 06 14
MV36 08 18
MV36 08 14
MV36 08 38
MV36 10 14
MV36 10 38

MV 36



MV39 04 M5
MV39 04 18
MV39 06 M5
MV39 06 18
MV39 06 14
MV39 08 18
MV39 08 14
MV39 08 38
MV39 10 14
MV39 10 38

MV 39



MV37 04 M5
MV37 04 18
MV37 06 M5
MV37 06 18
MV37 06 14
MV37 08 18
MV37 08 14
MV37 08 38
MV37 10 14
MV37 10 38

MV 37



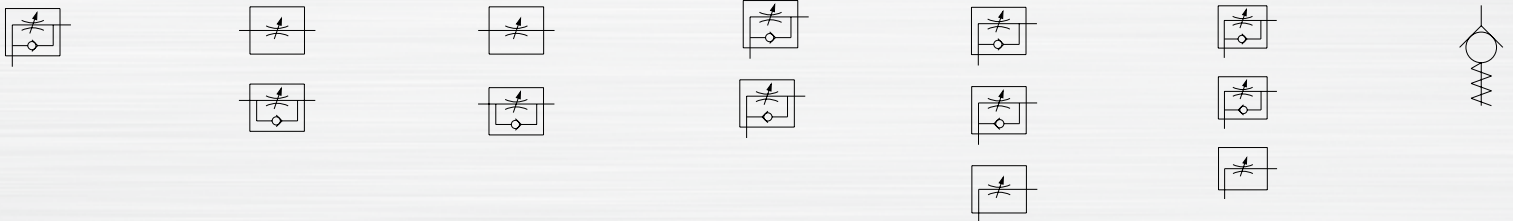
MV19 04 18
MV19 06 18
MV19 06 14
MV19 08 18
MV19 08 14

MV 19



MV28 04 M5
MV28 06 M5
MV28 06 18
MV28 06 14
MV28 08 18
MV28 08 14

MV 28



MV29 00 18
MV29 00 14
MV29 00 38
MV29 00 12

MV 29



MV21 00 M5
MV21 00 18
MV21 00 14
MV21 00 38
MV21 00 12

MV 21



MV34 04 04
MV34 06 06
MV34 08 08

MV 34



MV35 04 M5
MV35 04 18
MV35 06 18
MV35 06 14
MV35 08 18
MV35 08 14

MV 35



MV43 04 04
MV43 06 06
MV43 08 08

MV 43



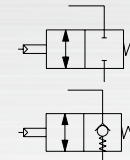
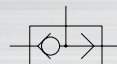
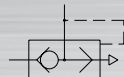
MV49 06 14
MV49 08 14
MV49 08 38
MV49 10 38

MV 49



MV23 00 M5
MV23 00 18
MV23 00 14
MV23 00 38
MV23 00 12

MV 23



MV33 04 M5
MV33 04 18
MV33 06 18
MV33 06 14
MV33 08 18
MV33 08 14
MV33 10 14
MV33 10 38
MV33 12 12
MV33 14 12

MV 33



MV22 08 14 -MA
MV22 14 14 -RA
MV22 10 38 -MA
MV22 38 38 -RA
MV22 12 12 -MA
MV22 12 12 -RA

MV 22



MV27 00 M5
MV27 00 18
MV27 00 14
MV27 00 38
MV27 00 12
MV27 00 34

MV 27



MV26 00 M5
MV26 00 18
MV26 00 14
MV26 00 38
MV26 00 12

MV 26



MV32 00 18
MV32 00 14

MV 32



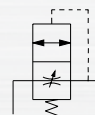
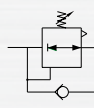
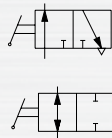
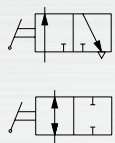
MV44 04 M5
MV44 04 18
MV44 06 M5
MV44 06 18
MV44 06 14
MV44 08 18
MV44 08 14

MV 44



MV45 00 18
MV45 00 14
MV45 00 38
MV45 00 12

MV 45



MV46 00 18
MV46 00 14

MV 46



MV48 06 06
MV48 08 08

MV 48



MV47 00 18
MV47 00 14

MV 47



MV50 00 14
MV50 00 38
MV50 00 12

MV 50



MV52 00 18
MV52 00 14
MV52 00 38

MV 52



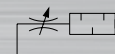
MV55 06 18
MV55 06 14
MV55 08 18
MV55 08 14

MV 55



MV11 00 18 - FE
MV11 00 14 - FE
MV11 00 38 - FE
MV11 00 12 - FE

MV 11 - FE



MV11 00 18 - FEP
MV11 00 14 - FEP
MV11 00 38 - FEP
MV11 00 12 - FEP

MV 11 - FEP



MV 11 - CO

MV11 00 M5 - CO
MV11 00 18 - CO
MV11 00 14 - CO
MV11 00 38 - CO
MV11 00 12 - CO



MV 11 - CQ

MV11 00 18 - CQ
MV11 00 14 - CQ
MV11 00 38 - CQ
MV11 00 12 - CQ



MV 11 - BE

MV11 00 M5 - BE
MV11 00 18 - BE
MV11 00 14 - BE
MV11 00 38 - BE
MV11 00 12 - BE



MV 11 - P

MV11 00 18 - P
MV11 00 14 - P
MV11 00 38 - P
MV11 00 12 - P



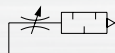
MV 11 - PL

MV11 00 18 - PL
MV11 00 14 - PL
MV11 00 38 - PL
MV11 00 12 - PL
MV11 00 12 - BE



MV 11 - VE

MV11 00 18 - VE
MV11 00 14 - VE
MV11 00 38 - VE
MV11 00 12 - VE



MV14 00 M5
MV14 00 18
MV14 00 14
MV14 00 38

MV 14



MV 24

MV24 00 18
MV24 00 14
MV24 00 38
MV24 00 12



MV 25

MV25 00 18
MV25 00 14
MV25 00 38
MV25 00 12



MV 53

MV53 00 18
MV53 00 14
MV53 00 38
MV53 00 12



MV 54

MV54 00 18
MV54 00 14
MV54 00 38
MV54 00 12



MV 51

MV51 06 06
MV51 06 18
MV51 06 14
MV51 08 08
MV51 08 18
MV51 08 14

Global solutions for a Global market

